

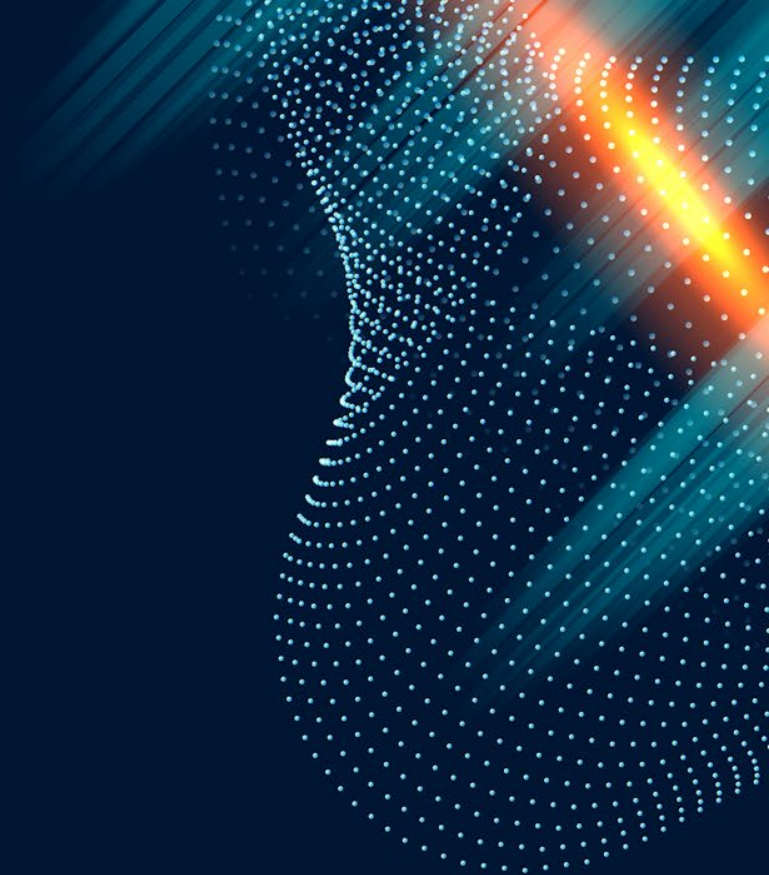
# Fike

---

Your Partner in Life &  
Critical Asset Safety

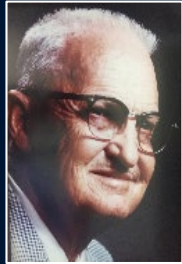


BECAUSE SO MUCH IS AT STAKE™



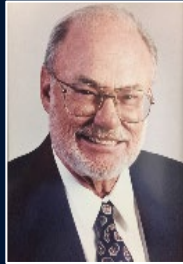
---

# A Family Dedicated To Protecting Yours



Lester Fike, Sr.

1945-1974



Lester Fike, Jr.

1974-1985



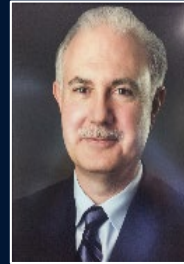
Gary Batz

1985-1997



Maxwell Jewell

1997-2010



Chuck Kopoulos

2010-2016



Brad Batz

2017-Present

# Fire Protection Overview

## Future Proof

Fike offers the latest fire & explosion detection and suppression technologies to reliably protect people and mission-critical assets.

## 80 Years

Decades of experience protecting numerous industries and their individual applications means that regardless of the challenge, Fike has a solution for nearly any unique challenge.

# Global Locations







# Manufacturing the Future of Safety

Fike manufacturing facilities offer in-house production and assembly for Fike fire & explosion protection solutions, including venting, passive and active isolation, suppression, and detection and control.

**Fike**

# Fire Protection

## Detection & Control

### Control Panels

---

Addressable and conventional panels, with releasing and voice annunciation capabilities

### Air Sampling

---

Continuously samples the air to provide early warning detection before a fire can occur

### Linear Heat

---

Fiber optic heat detection cable suited for areas where access is physically demanding or hazardous

### Flame Detection Cameras

---

Identifies fires and explosions in as few as 5 milliseconds and up to 230 ft

### Video Analytics

---

Uses network cameras to detect presence of smoke, flame or oil mist at its source

# Fire Protection

## Suppression

### Chemical Agents

- Fike SF 1230™
- FM-200®
- FK-5-1-12
- ECARO-25®

### Water Mist

- Fike DuraQuench® Pro
- Fike Micromist®

### Other Solutions

- Inert Gas
- CO2
- Video Flame Detection
- Fire Monitors



# Explosion Protection

## System Design & Solutions

Designs an explosion protection system to mitigate the primary deflagration and isolate it from connected equipment by using:

- | Explosion Venting
- | Explosion Suppression
- | Explosion Isolation
- | Explosion Prevention Methods







# Explosion Protection

## Consultancy

Creates an action plan to both identify hazards and their solutions in an effort to protect workers and comply with local standards.

| Facility Walkthrough

| Explosion Risk Assessment

| Dust Testing

| Incident Investigation and Analysis

# Research & Testing

## **Combustible Dust Testing Lab**

Performs dust testing to validate the explosibility characteristics of a facility's dust, which is used to verify hazards and support explosion protection product selection and design

## **Innovation & Testing Center**

Offers large-scale explosion testing within real-world applications and possesses one of the largest databases of explosion characteristics data in the world

## **ASME-Certified Flow Lab**

Plays a key role in the engineering and validating of Fike rupture discs' reliability in traditional or custom-engineered applications



# Explosion Protection

## Field Service

Global team of service technicians can quickly be on site to help service the system under NFPA/ATEX standards.

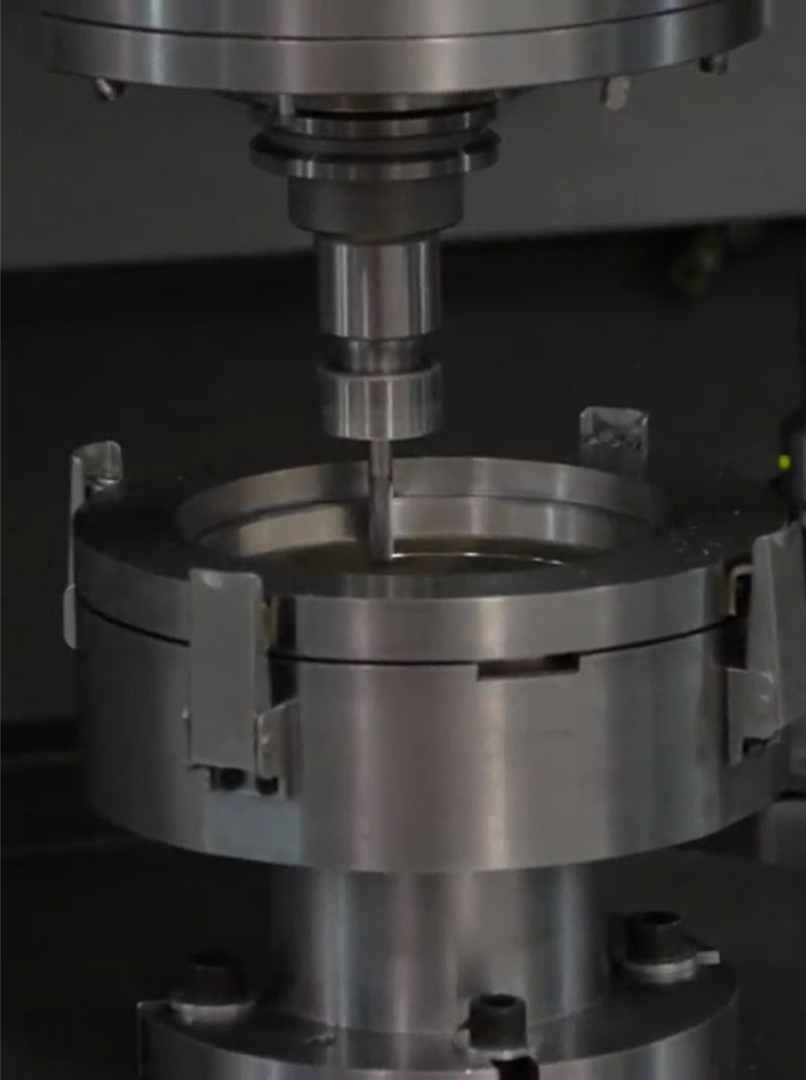
| Installation

| Commissioning

| Maintenance

| 24/7 Emergency Hotline





# Pressure Relief

## Rupture Discs

For more than 75 years, Fike rupture discs have been trusted to “burst” precisely when called upon to relieve overpressure in various applications.

| Hygienic Solutions

| Custom-Engineered Solutions

| Pressure Relief Valve Support

| Pressure Activation (Oil & Gas)



# Energy Storage Protection

**Fike Blue™**

Fike Blue is the first tested and patented solution that stops the lithium-ion battery hazard, **cascading thermal runaway.**

- | Immerses Module, Absorbs Heat
- | Extremely High Boiling Point
- | Greatly Reduces Toxic Offgas
- | PFAS Free, Environmentally Friendly